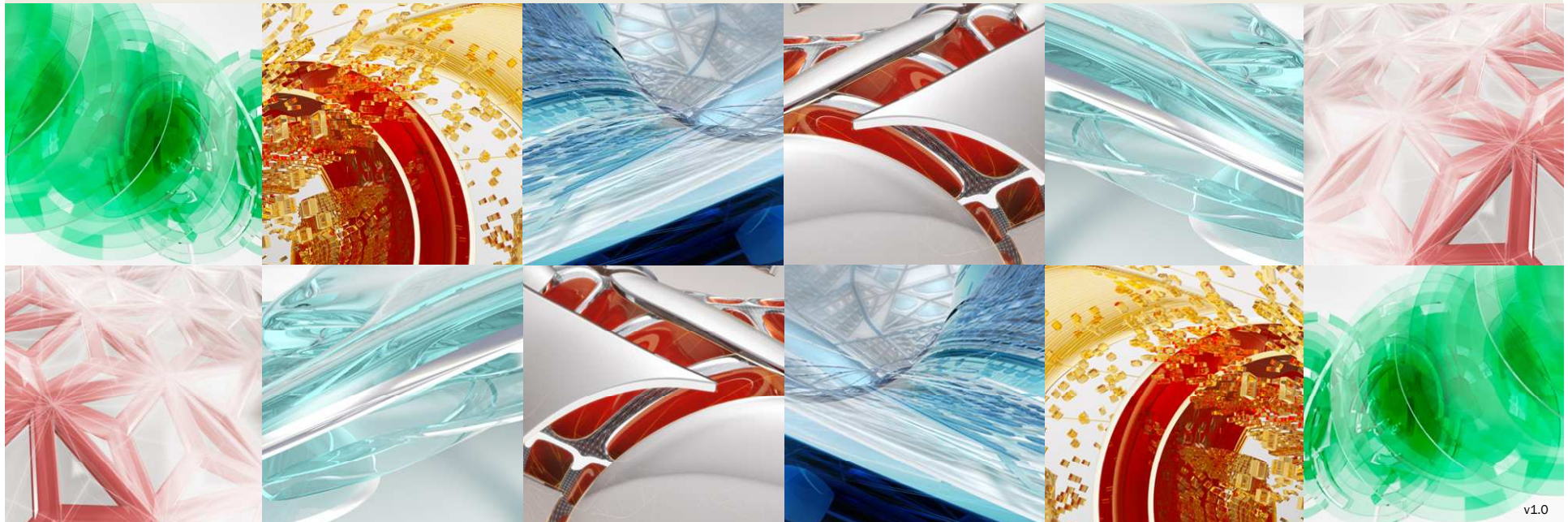


BIM-MEP^{AUS}

BIM Industry Collaboration



The background of the slide is an abstract composition of various green geometric shapes, including spheres, cylinders, and fragmented planes, creating a sense of depth and complexity. A dark grey horizontal band is positioned across the middle of the image, serving as a backdrop for the title text.

1. What is BIM-MEP^{AUS}

1. What is BIM-MEP^{AUS} ?

Some current issues delivering BIM:



- Perceived to be too complex and too difficult to adopt
- Lack of standardization
- Data lost in translation between software programs
- Time taken to build 3D content

1. What is BIM-MEP^{AUS} ?

Project Board;



Mr Sumit Oberoi
Executive Director
AMCA



Mr Warwick Stannus
Engineering Manager
AG Coombs



Mr Russell Telford
Managing Director
AG Coombs



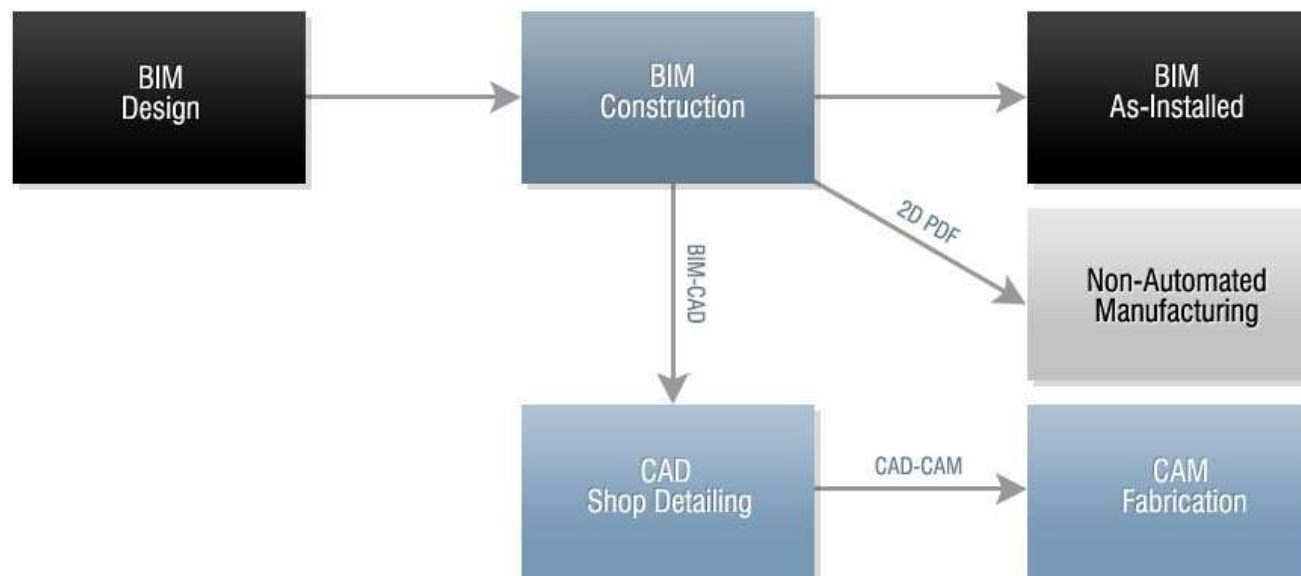
Mr Christopher Rankin
Executive Director
AMCA (SA)



Mr Daniel Sullivan
Technical Services Manager
D&E Air Conditioning

1. What is BIM-MEP^{AUS} ?

Established Workflows:



1. What is BIM-MEP^{AUS} ?

Standards:

- Naming Conventions and Units of Measure
- Scheduling Guidelines
- Air side Ducting and Insulation Modelling specification
- Water side and piping naming schedule
- Pump Modelling specification
- Water Cooled Electric Chiller specification
- Adjustable Pitch Axial Fan specification

BIM-MEP^{AUS}

BIM-MEP^{AUS} PRACTICES

Naming Conventions and Units of Measure

Issued By:	BIM-Australia 30 Cromwell Street, Sunwood 3025 VIC Australia
Revision:	Initial Release
Date:	2013-03-01

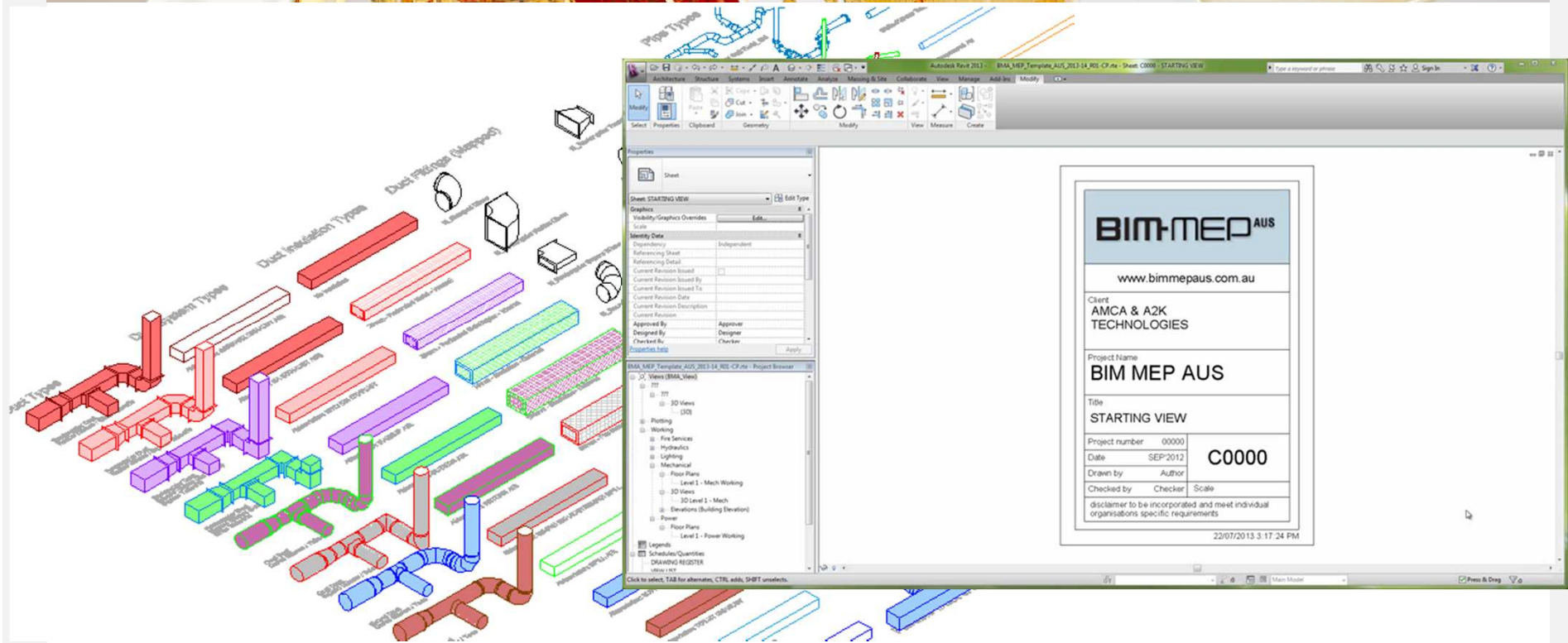
1. What is BIM-MEP^{AUS} ?

The screenshot displays the BIM-MEP AUS website interface. At the top, there is a navigation bar with links for Log In, Register, and My Cart. Below this is a search bar. The main content area is divided into two columns. The left column features a 'MANUFACTURERS' sidebar with a list of manufacturers including Allvent, Antec, Automatic Heating, Bullock, Celmece, Dadanco, Fantech, Frese, Holyoake, Kingspan, KSB Australia, Reece - Conex Banninger, Reece - CTS Flange, Reece - Dura, Revit Template, Smart-PowerPax, SW Hart & Co, and Victaulic. The right column shows a 'Manufacturers' section with logos for Allvent, Antec, Automatic Heating, and Baltimore Aircoil. Below this is a 'PRODUCT RANGE' section with logos for Bradflo, Bullock, Celmece, and Consolidated Metro Group. A large red text overlay in the center reads 'www.thinkbimmepaus.com.au'. On the right side, there is a detailed view of a 'Smart-Powerpax Water Cooled Chiller 45-0359 RH/RH' with a 3D model and a 'NEW' tag. Below this, there is a section titled 'About Smart-PowerPax' with text describing the company's commitment to excellence and its products.

www.thinkbimmepaus.com.au

2. BIM-MEP^{AUS} Template

2. BIM-MEP^{AUS} Revit MEP Template




2. BIM-MEP^{AUS} Revit MEP Template

BIM-MEP^{AUS}

9.2 Using Duct Linings/Insulations

For the correct hatching to appear on the duct insulations follow these steps

1. Select the run of ductwork
2. Click the Add Insulation button
3. Apply the type of insulation facing and thickness to be used
4. With the original run of ductwork selected click the
5. In the properties under Identity Data, fill in the values for "BCA Rating" and "InsulationCode"
6. The view templates will apply the appropriate hatching



Modify | Ducts | Duct Systems

Justify | Add Insulation | Edit Insulation In | Edit Insulation Out

BCA Rating: RT3

InsulationCode: E

InsulationCode

O = Outdoor

E = External

F = Fire

10 Duct Fittings **

10.1 Rectangular Duct General Parameters

All parameters are instance parameters unless noted otherwise

10.1.1 Dimensional Parameters

Flange Thickness – Adjusts the flange thickness

Flange Size – Adjusts the protrusion of the flanged measured from the outside face of the duct

Extension1, Extension2,... – Adjusts the straight section and the ends of the fitting

Duct Width, Duct Width1, Duct Width2,... – Controls duct width. Multiple duct width allows for reducing fittings.

Duct Height – Controls duct height


Vane Spacing – Controls the vane spacing

Angle – Reports the angle of the fitting

Size – Reports the connector size

BIM-MEP^{AUS}

BIM-MEP^{AUS} Template Changes for April 2014



New

1 Duct Fittings

1.1.1 BMA-Duct-Rectangular-Offset-Mitred

Offset – Adjusts the centreline to centreline distance between each end (negative value allowed)

OffsetLength – Adjusts the total length of the offset from end to end.

1.1.2 BMA-Duct-Rectangular-Offset-Radius

Offset – Adjusts the centreline to centreline distance between each end (negative value not allowed, use the icon to rotate the fitting instead)

OffsetLength – Adjusts the total length of the offset from end to end.

1.1.3 BMA-Duct-Rectangular-Offset-Reducing

Offset – Adjusts the centreline to centreline distance between each end (negative value allowed)

OffsetLength – Adjusts the total length of the offset from end to end.

1.1.4 BMA-Duct-Round-Offset-Mitred

Offset – Adjusts the centreline to centreline distance between each end (negative value allowed)

OffsetLength – Adjusts the total length of the offset from end to end.

1.1.5 BMA-Duct-Round-Offset-Reducing

Offset – Adjusts the centreline to centreline distance between each end (negative value allowed)

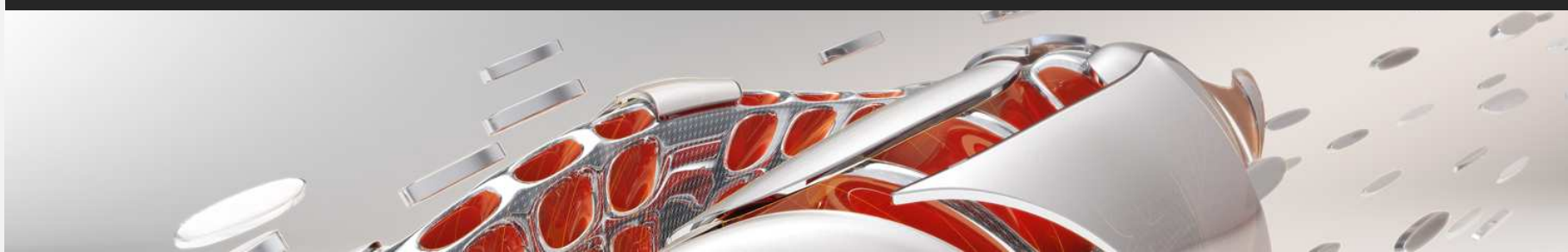
OffsetLength – Adjusts the total length of the offset from end to end.

2 Pipe types

Victaulic AWWA			
	Fitting Family	Min. Size	Max. Size
Pipe Segment	Ductile Iron - 22	75,000 mm	120,000 mm
Elbow	Victaulic-AWWA-Elbow No 10C-13C Standard	All	
Preferred Junction Type	Tee	All	
Junction	Victaulic-AWWA-Tee-Bullhead Tee-Reducing Tee No 20C-21C-25C Standard	All	
Cross	Victaulic-AWWA-Cross-Reducing Cross No 35C-35CR Standard	All	
Transition	Victaulic-AWWA-Concentric Reducer No 50C Standard	All	
Union	Victaulic-AWWA-Coupling Style 31 Standard	All	
Flange	None	None	

3. Manufacturers Content

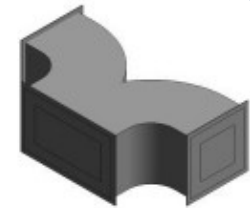
3. Manufacturers Content



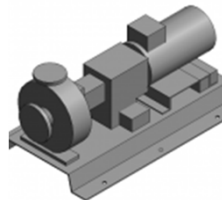
AutomaticHeating
efficiency □ performance □ solutions



CONDENSING GAS HEATING BOILERS



KOOLDUCT DUCT & DUCT FITTINGS

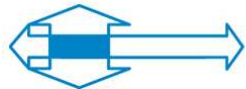
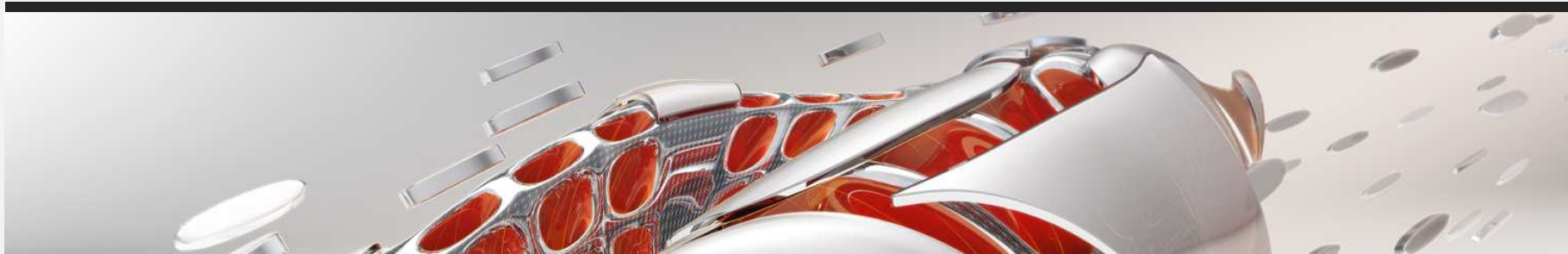


PUMPS



PIPE FITTINGS - VALVES

3. Manufacturers Content



HOLYOAKE
AIR MANAGEMENT SOLUTIONS

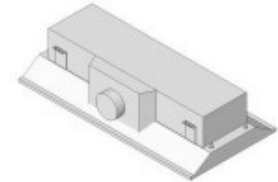


PLENUMS, LOUVRES, VAV



DADANCO

Breathing Life Into Your Building



CHILLED BEAMS, INFFUSERS



celmec
INTERNATIONAL

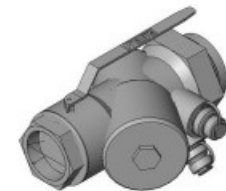


*FIRE DAMPERS, VOLUME DAMPERS,
VAV TERMINAL UNITS*

Frese

Energy-saving valves

Tradelink



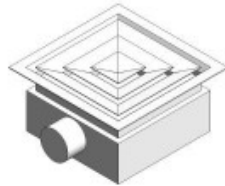
PIPE FITTINGS - VALVES

3. Manufacturers Content



S W Hart & Co®

DIFFUSERS, REGISTERS, DAMPERS, GRILLES



FANS



AIR & WATER COOLED CHILLERS



FIRE, VOLUME & NON RETURN DAMPERS



3. Manufacturers Content



Conex | Bänninger

100+ DOING MORE - Since 1909

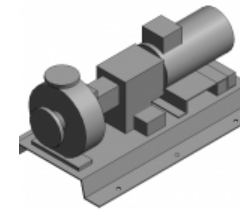
PRESS FIT PIPE FITTINGS



COPPER PIPE FLANGES



PIPE VALVES & STRAINERS



Pumps

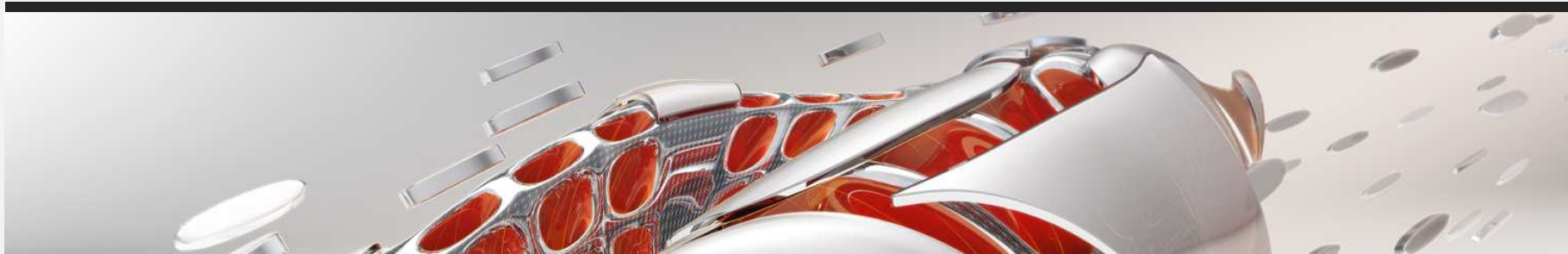


ALLVENT
Ventilation Products



Jetfans

3. Manufacturers Content

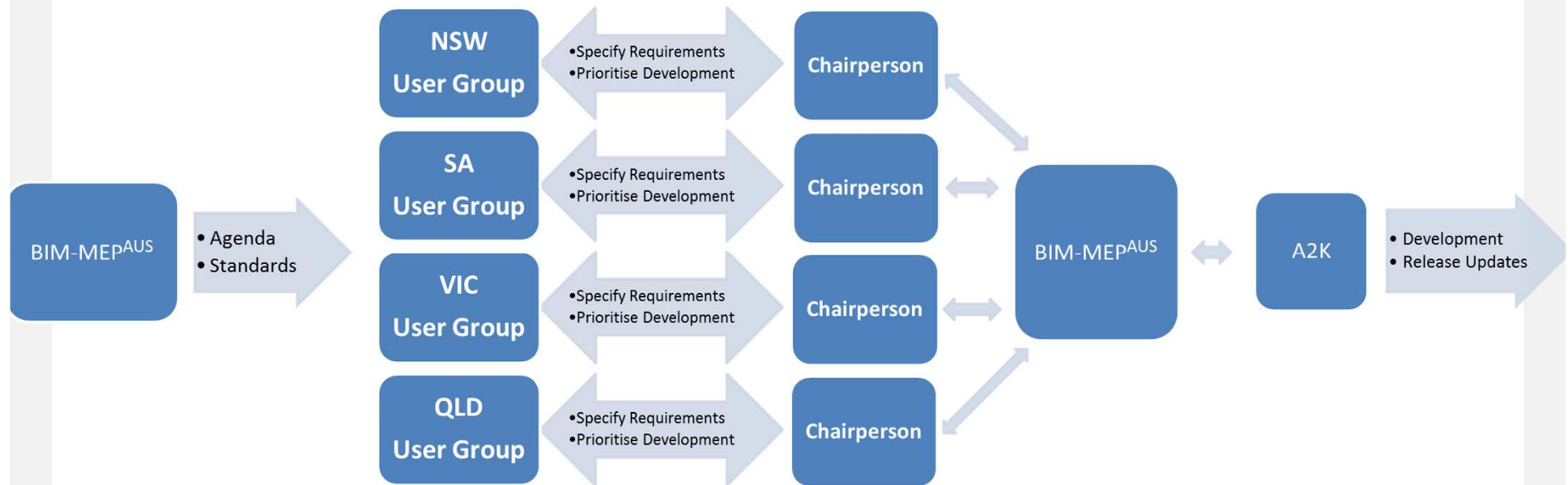
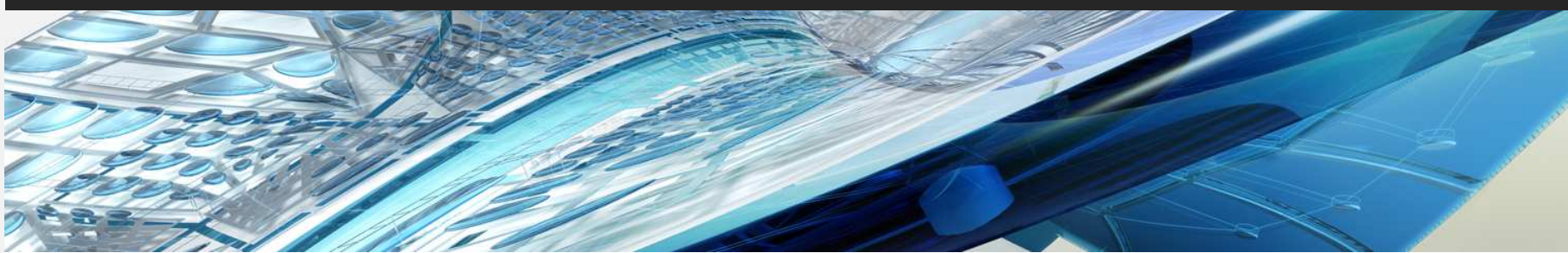


IN DEVELOPMENT...



4. Future Development

4. Future Development



4. Future Development



BIM-MEP^{AUS}

User Group Charter

Purpose

The development of BIM-MEP^{AUS} software tools are driven by users through the various state User Groups. The User Groups meet regularly to discuss any changes required to current materials, and to identify priorities for future development of the software and any additional functionality that is required.

The BIM-MEP^{AUS} User Groups are a representative group of users that share a common interest to strengthen the up-take, implementation and general use of BIM-MEP^{AUS}, and directly impact the continual improvement of BIM processes in our construction industry.

As a result of the development that occurs from the directives of the user groups the cost of BIM development and execution in individual organizations will be minimized.

Goals & Responsibilities

- Provide a formal, organized medium for the exchange of knowledge, ideas and experiences relating to use of BIM-MEP^{AUS}
- Assist BIM-MEP^{AUS} in establishing priorities by identifying and prioritizing user requests
- Provide a collaborative, productive atmosphere amongst industry peers

BIM-MEP^{AUS}



FEEDBACK FORM

BIM-MEP^{AUS} is delivering software tools for more efficient adoption of Building Information Modeling. This is delivered through customised software templates and content all developed with input from industry and to standards written by the BIM-MEP^{AUS} committees.

As a subscriber to BIM-MEP^{AUS} you too can have a say in the development, please provide us your suggestions using this form.

Company Name: _____

Your Name: _____

Contact Phone Number: _____

Which software this request relates to? Revit MEP ☐ Fabrication ☐

Which Version? 2012 ☐ 2013 ☐ 2014 ☐

Please describe your recommendation:

5. BIM-MEP^{AUS} Forum

5. BIM-MEP^{AUS} Forum



BIM-MEP^{AUS}
CONSTRUCTION INNOVATION
2014 FORUM

7th & 8th August Melbourne Convention & Exhibition Centre

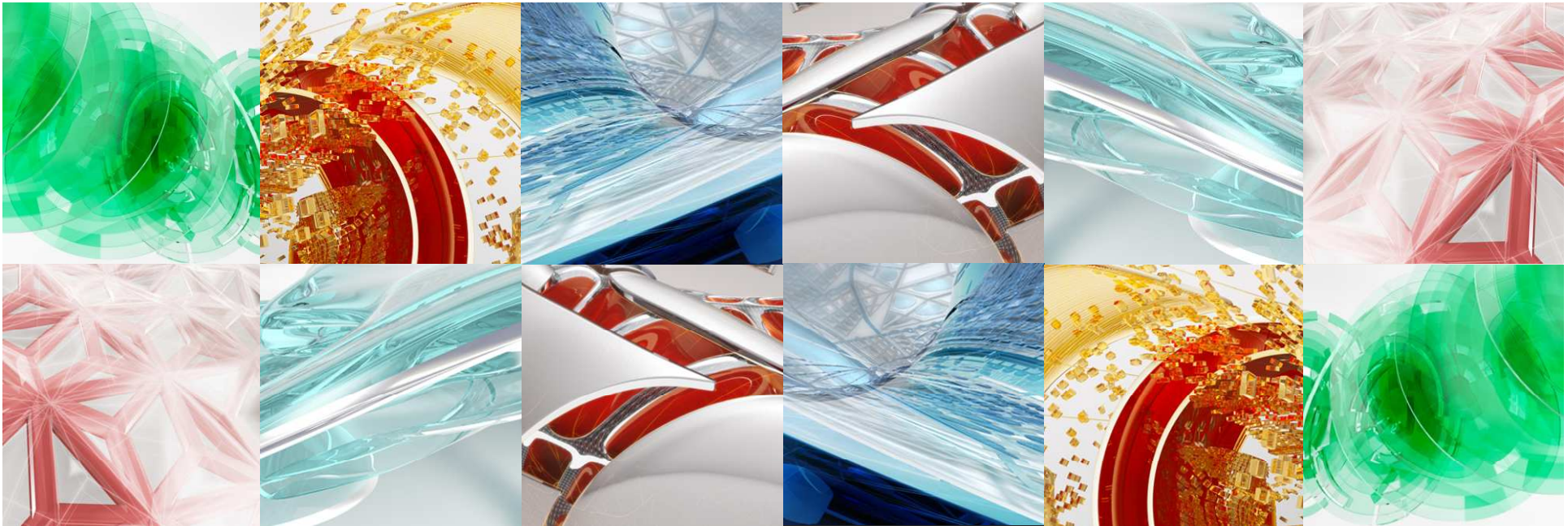
- Mr James Barrett Director, Integrated Building Solutions, *Turner Construction*
- Mr Andy Sneyd Head of Design, *Crown House Technologies*
- Mr Steve Butler Revit MEP Product Manager, *Autodesk*
- Mr Andy Robins Fabrication Product Manager, *Autodesk*
- Mr Josh Getz Corporate BIM Manager, *Southland Industries*

How do I get access to all the BIM-MEP^{AUS} materials?

	AMCA Members	Non-AMCA Members
Single Access	\$875.00 + GST	\$1,295.00 + GST
5+ Access	\$3,250.00 + GST	\$4,875.00 + GST

- Revit MEP Template
- Content Libraries
- All updates and new content
- Participate in development and future direction

www.thinkbimmepaus.com.au



Thank you

Contact A2K Technologies

TEL: 1800 223 562
FAX: 1800 034 444
EMAIL: solutions@a2ktechnologies.com.au
WEB: www.a2ktechnologies.com.au

